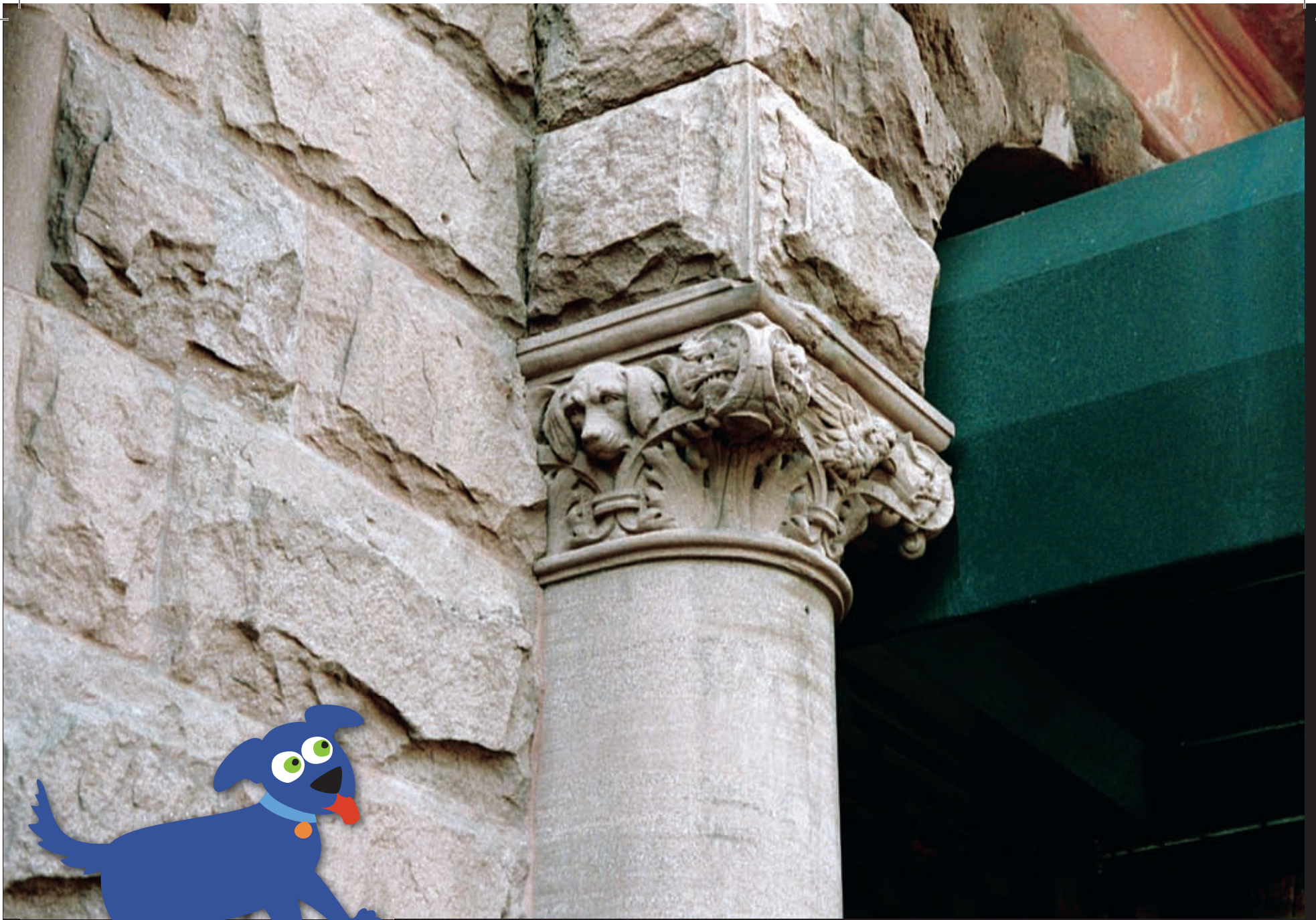


# Urban Animals

BY Isabel Hill



Star Bright Books  
New York



The details of this **column** have lasted for years,



you can still see a dog with long droopy ears.

# Animal Habitats



B. W. Mayer Building  
130 East 25th St., Manhattan  
Built: 1916  
Architect: Herman Lee Meader



Kings County Savings Bank  
135 Broadway, Brooklyn  
Built: 1868  
Architects: King & Wilcox



162 West 84th St., Manhattan  
Built: 1891  
Architect: Edward Wenz



Maritime Exchange Building  
80 Broad St., Manhattan  
Built: 1930  
Architects: Sloan & Robertson



88 Prospect Park West, Brooklyn  
Built: 1908-09  
Owner/Architect: Roundtree Realty Co.



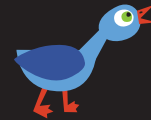
1040 Park Ave., Manhattan  
Built: 1924  
Architects: Delano & Aldrich



Central Savings Bank  
2100-2108 Broadway, Manhattan  
Built: 1927-28  
Architects: York & Sawyer  
Ironwork: Samuel Yellin



Sheffield Farms Milk Plant  
1368 Fulton St., Brooklyn  
Built: 1915  
Architect: Frank A. Rooke



Chanin Building  
122 East 42nd St./125 East 41st St., Manhattan  
Built: 1927-29  
Architect: Sloan & Robertson with  
Rene Chamberllan & Jacques L. Delamarre



250 Garfield Place, Brooklyn  
Built: 1891  
Architect: Helmer Westoen



Bunny Theater  
3589 Broadway, Manhattan  
Built: 1913  
Architect: George H. Pelham



Belmont Plaza Hotel  
541 Lexington Ave., Manhattan  
Built: 1928  
Architect: Emery Roth



568 Fourth St., Brooklyn  
Built: 1909  
Architect: Arthur R. Koch



210 East 73rd St., Manhattan  
Built: 1928-1931  
Architect: Emery Roth



George S. Bowdoin Stable  
149 East 38th St., Manhattan  
Built: 1902  
Architect: Ralph S. Townsend



46 West 90th St., Manhattan  
Built: 1901-02  
Architect: Theodore E. Thomson



Liberty Tower  
55 Liberty St., Manhattan  
Built: 1909-10  
Architect: Henry Ives Cobb